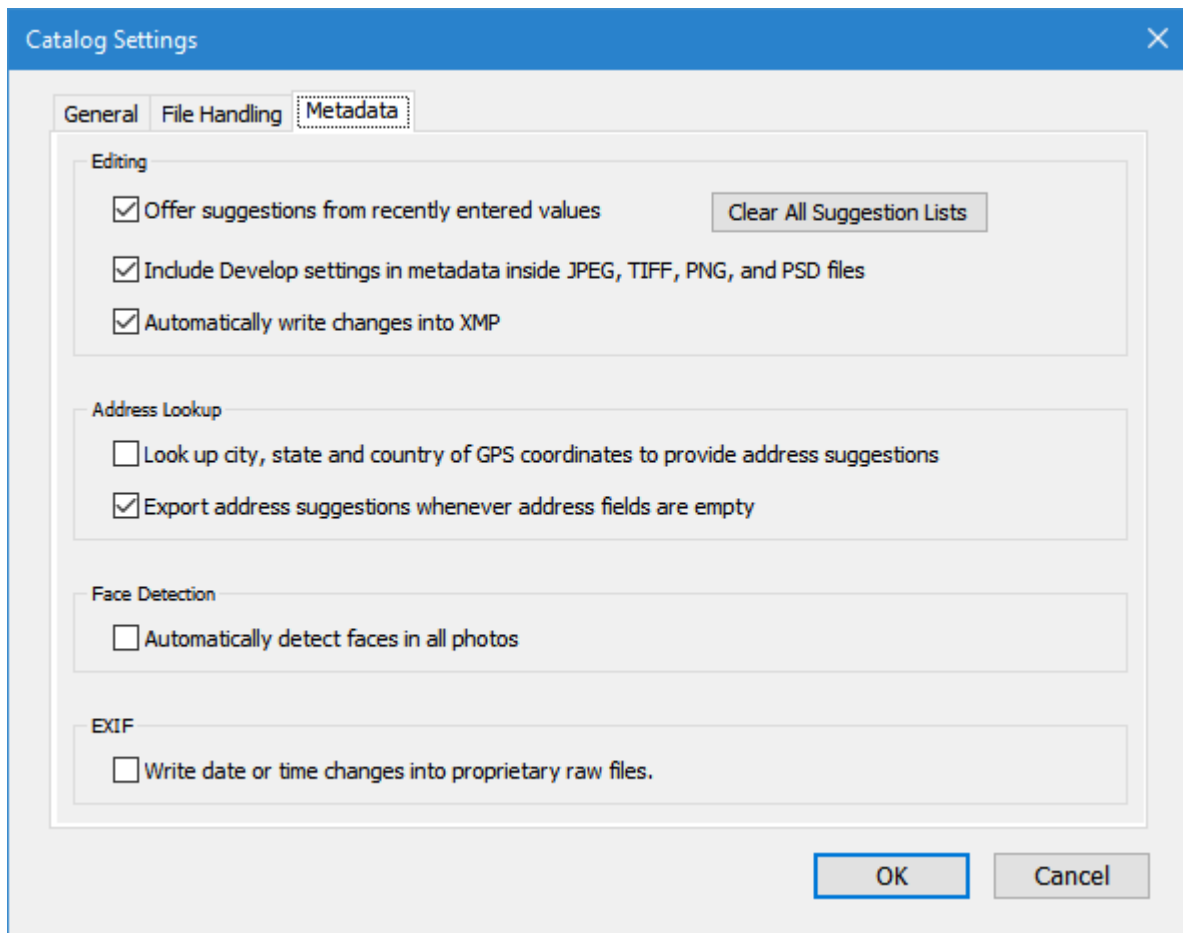


## Lightroom 6.14



Exiftool args:

-iptc:keywords  
-xmp:keywords  
-xmp:subject  
-xmp:hierarchicalsubject

Exiftool output for GX-1250500.jpg

Keywords : Bucks, Great Holm, Lake, Lodge Lake, Milton Keynes, Places, Scenery, UK  
Subject : Bucks, Great Holm, Lake, Lodge Lake, Milton Keynes, Places, Scenery, UK  
Hierarchical Subject : Places|UK|Bucks|Milton Keynes|Great Holm|Lodge Lake, Scenery|Lake

Abbreviated Lightroom hierarchy: (top levels are not "Include on export")

Places

UK

Bucks

Milton Keynes

Great Holm

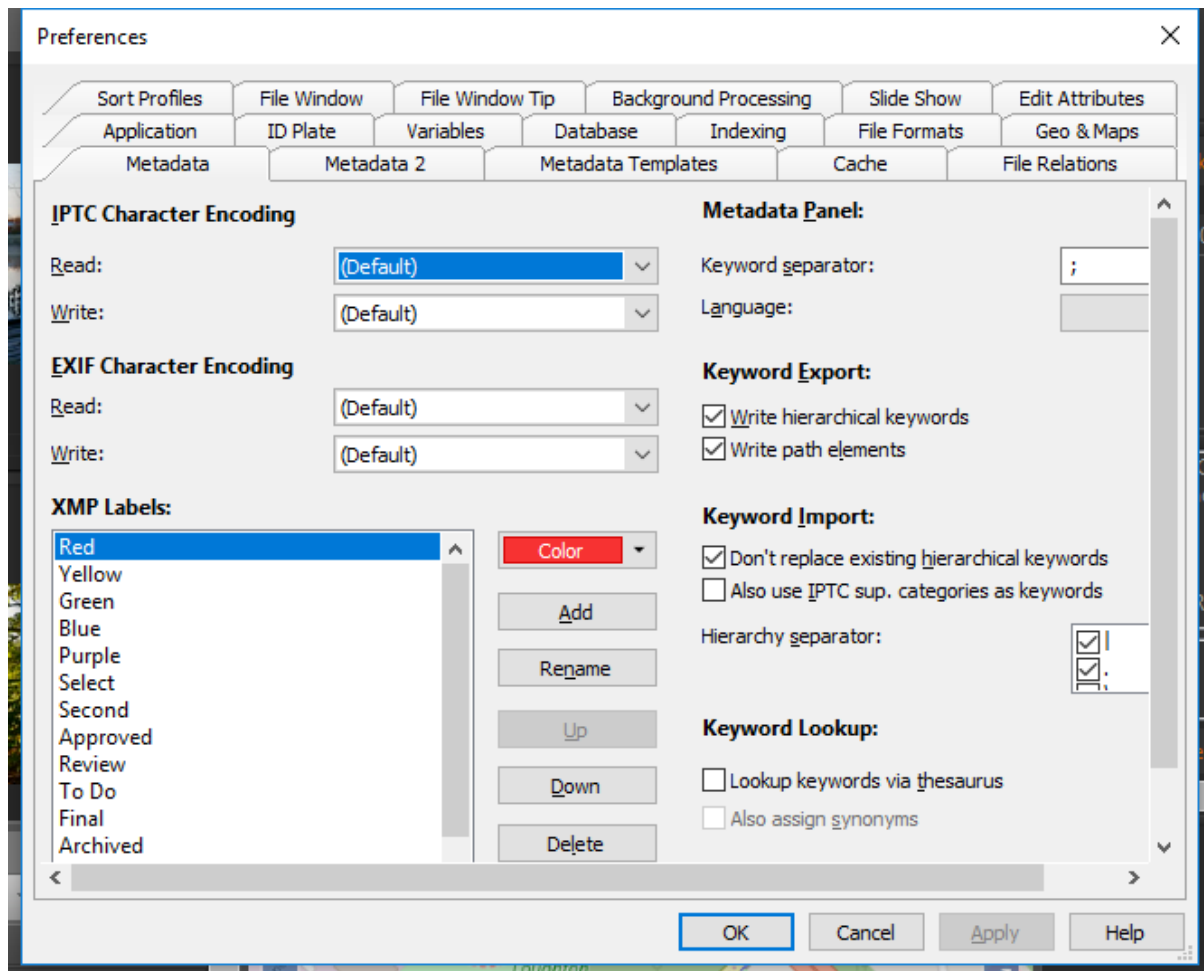
Lodge Lake

Scenery

Lake

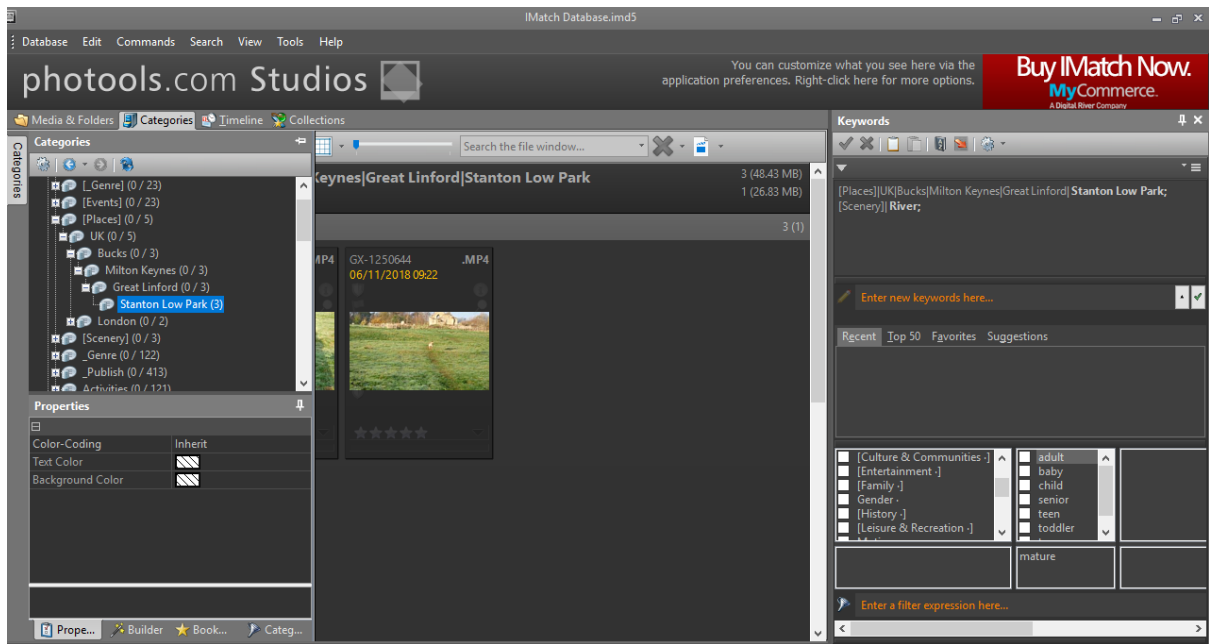
Used Lr menu action Metadata, Save Metadata to file for all files to be imported to IMatch.

## IMatch 2019

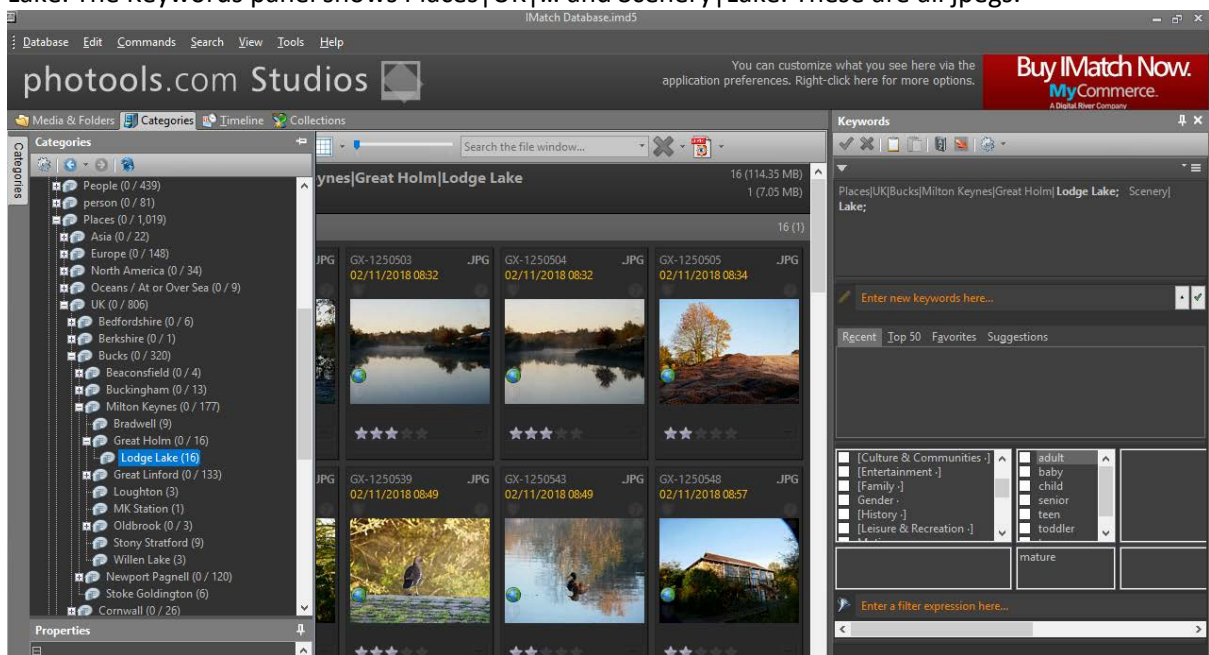


Immediately after Adding all the image files in the file structure managed by the Lightroom database. I didn't use the Lightroom import feature and I didn't load the Lightroom keywords file into IMatch.

There is a Category named [Places] with 3 images in it with Keywords [Places] | UK | ... and [Scenery] | River. All 3 images are actually .mp4 movies as it turns out. Exiftool didn't find any keywords in those 3 files (not surprisingly) but I don't get how IMatch managed to associate them with highly appropriate keywords even though grouped under [Places] and [Scenery] and not the one without the square brackets.



The Categories panel here shows the Places category and its children and the selected one is Lodge Lake. The Keywords panel shows Places|UK|... and Scenery|Lake. These are all jpegs.



Here's a close up of the Categories panel.

